

IP SPEED DOME CAMERA

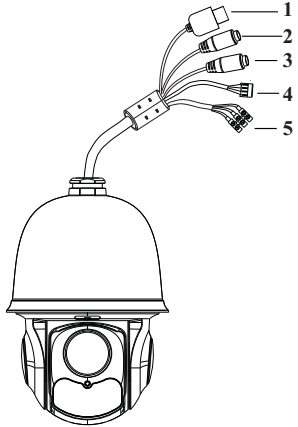
Quick Start Guide

■ Please read this instruction carefully for correct use of the product and preserve it for reference purposes.

■ All the examples and pictures used here are for reference only.

■ There may be several technically incorrect places or printing errors in this manual. The updates will be added into the new version of this manual. The contents of this manual are subject to change without notice.

1. Interfaces and Parts

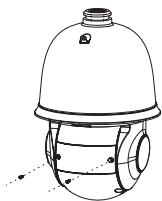


- ① LAN
- ② HP Audio Out
- ③ MIC In
- ④ Alarm In/Alarm Out
- ⑤ Power

2. Installation

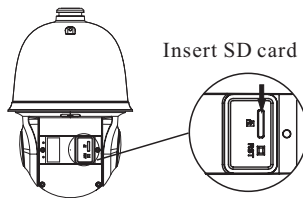
Please make sure the wall is strong enough to bear the dome camera's weight. Please make sure the camera is powered off during installation.

◆ Install SD Card



① Loosen the two screws of the dome.

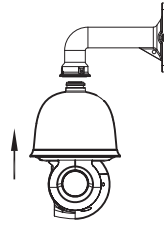
1



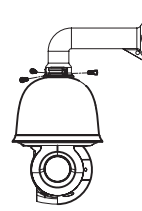
② Open the cover and insert SD card.

1

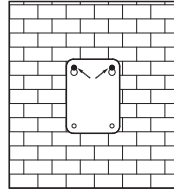
◆ Install the Speed Dome



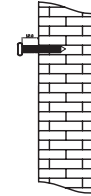
① Pull the cables through the bracket. Mount the speed dome to the bracket.



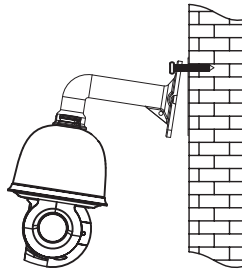
② Secure the speed dome to the bracket with the screws.



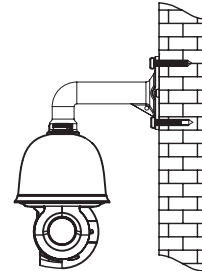
③ Drill the screw holes on the wall according to the drill template. Then insert the plastic plugs into the holes.



④ Drive the two screws to the holes indicated by the arrows (left) and leave 12mm clearance.

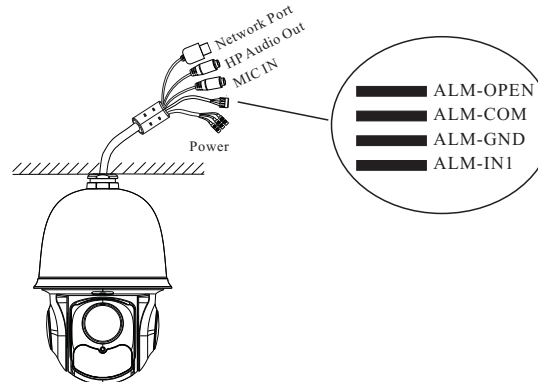


⑤ Connect the cables and then hang the bracket on the wall.



⑥ Fix the bracket to the wall with four screws.

3. Connections



2

Alarm Connection:

1. Alarm Input

a) There is one independent alarm input port (ALM-IN1) and one grounding port (ALM-GND).

b) Alarm input(NO type): Connect DC5V~DC12V voltage between the alarm input port (ALM-IN1) and the grounding port (ALM-GND).

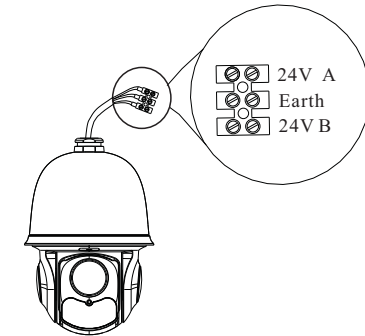
c) Alarm input(NC type): Disconnect the voltage between the alarm input port (ALM-IN1) and the grounding port (ALM-GND).

2. Alarm Output

a) Support 1CH alarm output including OPEN, COM connections.

b) Alarm output: One passive switch for user to connect alarm devices; the alarm output state will be auto on/off according to your setting.

Power Connection:



4. IE Network Connections

You can connect the IP camera through LAN/WAN access. Here take the IE browser (6.0) for example.

◆ LAN

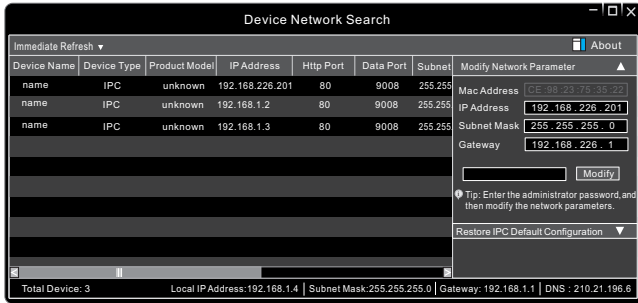
In LAN, there are two ways to access. a. Access through IP-Tool; b. Directly Access through IE Browser

● Access the camera through IP-Tool

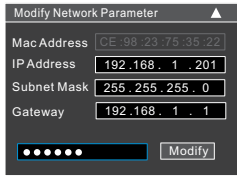
① Make sure that the camera and the PC are well connected to the LAN.

3

② Find the IP-Tool from the CD and then install it in the PC. After that, run the IP-Tool as shown below.



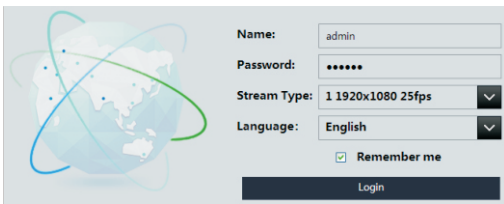
③ Modify the IP address. The default IP address of this camera is 192.168.226.201. Click the information of the camera listed in the above table to show the network information on the right hand. Modify the IP address and gateway of the camera and make sure its network address is in the same local network segment as the computer's. Please modify the IP address of your device according to the practical situation.



For example, the IP address of your computer is 192.168.1.4. So the IP address of the camera shall be changed to 192.168.1.X. After modification, please input the password of the administrator and click “Modify” button to modify the setting.

⚠ The default password of the administrator is “123456”.

④ Double-click the IP address and then the system will pop up the IE browser to connect IP-CAM. IE browser will auto download the Active X control. After downloading, a login window will pop up as shown below:



Input the user name and password to login.

⚠ The default username is **admin**; the default password is **123456**.

● Directly Access Through IE

The default network settings are as shown below:

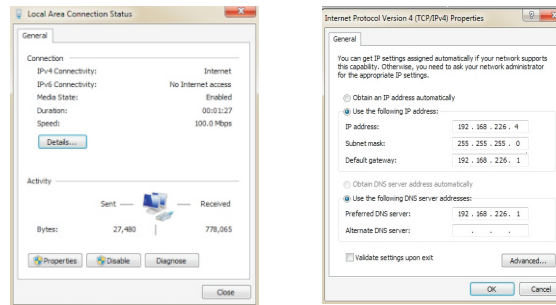
IP address: 192.168.226.201 HTTP:80

Subnet Mask: 255.255.255.0 Data Port:9008

Gateway: 192.168.226.1

You may use the above default settings when you log in the camera for the first time.

① Set the IP address of the PC and the network segment should be as the same as the default settings of IP-CAM. Open the network and share center. Click “Local Area Connection” to pop up the following window. Select “Properties” and then select Internet protocol according to the actual situation (for example: IPv4). Next, click “Properties” button to set the network of the PC.



② Open the IE Browser and input the default address of IP-CAM and confirm. The IE browser will download Active X control automatically.

③ After that, the login dialog box will pop up.

④ Input the default username and password and then enter to view.

◆ WAN

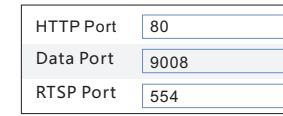
Take access the device by the router or virtual server for example.

① Make sure the camera is well connected via LAN; Then log in the camera via LAN and go to the System Config→Network Config→Port menu to set up the port number.

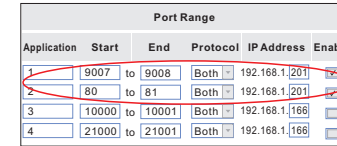
② Enter System Config→Network Config→Wired menu to modify the IP address.

③ Go to the router’s management interface through IE browser to forward the IP address and port of IP-CAM in the “Virtual Server”.

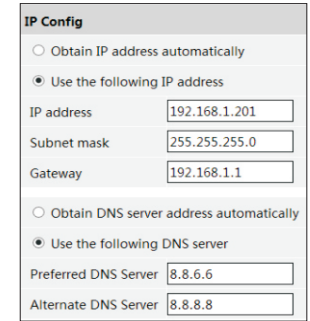
④ Open the IE browser and input its WAN IP and HTTP port to access the IP-CAM.



Port Config



Router Config



IP Config

Preset Description

Call Preset	Call No. 90 Preset	Run track 1
	Call No. 91 Preset	Run cruise 1
	Call No. 92 Preset	Run cruise 2
	Call No. 93 Preset	Run cruise 3
	Call No. 94 Preset	Run cruise 4
	Call No. 95 Preset	OSD menu
Set Preset	Call No. 97 Preset	Enable random scan
	Call No. 99 Preset	Enable P-PSCAN
	Set No. 91 Preset	Set random scan; Task auto call the beginning point
	Set No. 92 Preset	Set left border of P-PSCAN
	Set No. 93 Preset	Set right border of P-PSCAN
Set Preset	Set No. 94 Preset three times	Set the boundary value of the near and middle infrared light
	Set No. 95 Preset three times	Set the boundary value of the middle and far infrared light